

Using Sitelok with WYSIWYG Web Builder



Using Sitelok with WYSIWYG Web Builder

Copyright 2018 Vibralogix. All rights reserved.

This document is provided by Vibralogix for informational purposes only to licensed users of the Sitelok product and is provided on an 'as is' basis without any warranties expressed or implied.

Information in this document is subject to change without notice and does not represent a commitment on the part of Vibralogix. The software described in this document is provided under a license agreement. The software may be used only in accordance with the terms of that license agreement. It is against the law to copy or use the software except as specifically allowed in the license.

It is the users responsibility to ensure the suitability of Sitelok before using it. In no circumstances will Vibralogix be responsible for any loss or damage of data or programs as a result of using Linklok. Your use of Sitelok implies acceptance of these terms.

Contents

Chapter 1 Introduction	4
About this manual	4
Using .php pages	4
Chapter 2 Securing a members page	5
Securing a page	5
Chapter 3 Logout	7
Chapter 4 Displaying user data	8
Chapter 5 Registration forms	9
Creating the form	9
Add the form to your page	10
Chapter 6 Update profile forms	13
Creating the form	13
Add the form to your page	13
Chapter 7 Login forms	14
Creating the form	14
Add the form to your page	14
Chapter 8 Contact forms	15
Creating the form	15
Add the form to your page	15
Chapter 9 Download links	16
Storing your files	16
Creating a download link	16
Chapter 10 Support	17

Chapter 1 Introduction

About this manual

This manual has been written to help users of WYSIWYG Web Builder to integrate Sitelok in their projects. It is not meant to replace the main Sitelok Manual but really to explain WYSIWYG Web Builder specific points. We assume that you have installed Sitelok on your server already and that it is working properly. If you need any help with installation please let us know.

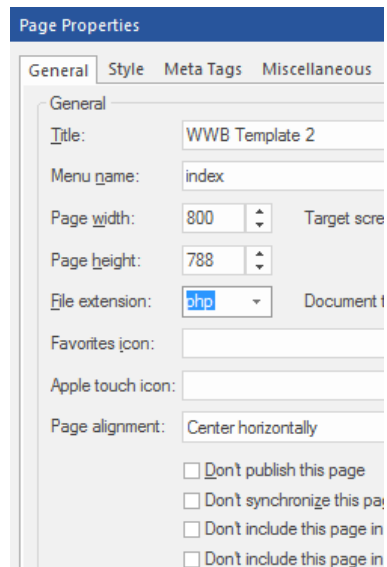
As Sitelok uses PHP you won't be able to test the functionality of your pages within WYSIWYG Web Builder so you must publish your site to test the pages.

We have written this manual based on WYSIWYG Web Builder 12 but other versions should have similar settings.

Using .php pages

Sitelok normally requires pages to have the php extension. PHP pages are exactly the same as HTML pages, just with a different page extension. WYSIWYG Web Builder make it easy to set the page type by going to **Pages - Page properties** in the menu. Just select **PHP** for the **File extension**.

If for some reason you can't change the extension of your pages, perhaps because its an existing site, then check with your hosting company as most servers can be set to allow PHP to be used inside .html pages. This way you don't have to rename the pages.

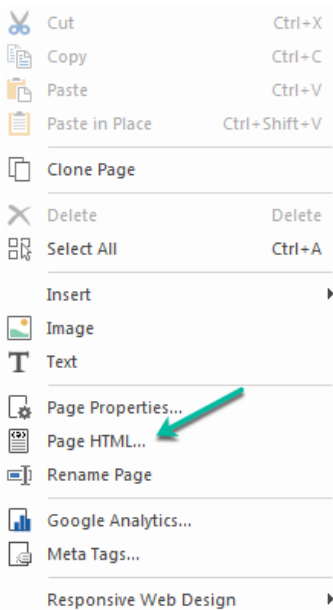


Chapter 2 Securing a members page

Securing a page

Sitelok can secure .php pages on your site by simply adding a code snippet to the very top of the the page telling Sitelok which usergroups have access.

- 1) First of all create the page you want to secure. To secure it right click on the page and select **Page HTML...**



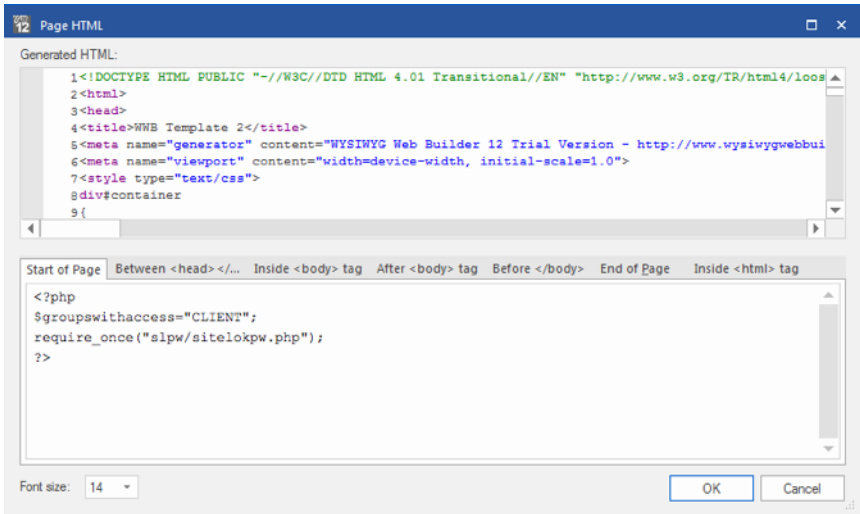
- 2) Select the **Start of Page** tab

- 3) In the box paste in this snippet.

```
<?php
$groupswithaccess="CLIENT";
require_once ("slpw/sitelokpw.php");
?>
```

Chapter 2 Securing a members page

This tells Sitelok to only allow access to members of the CLIENT usergroup. You can replace CLIENT with another group name or list multiple groups separated by commas.



Click **OK** to save the changes.

Please note that the above code assumes that your page is in the root of your site. If it is in a folder then you need to adjust the relative path to

```
require_once("../slpw/sitelokpw.php");
```

Once a page has been secured a login form will appear when a user tries to access the page and they are not already logged in.

The default login form that appears can be styled in the Sitelok control panel in **Forms - Default Login form style** or can be replaced by your own custom login template (see the main Sitelok manual for details).

Chapter 3 Logout

You can add a logout link to your site by creating a hyperlink that points to

</slpw/sitelokpw.php?sitelokaction=logout>

When a user clicks a logout link they will be taken to the Logout page URL you have set in the Sitelok control panel ([Tools](#) - [Configuration](#) - [Pages & templates](#))

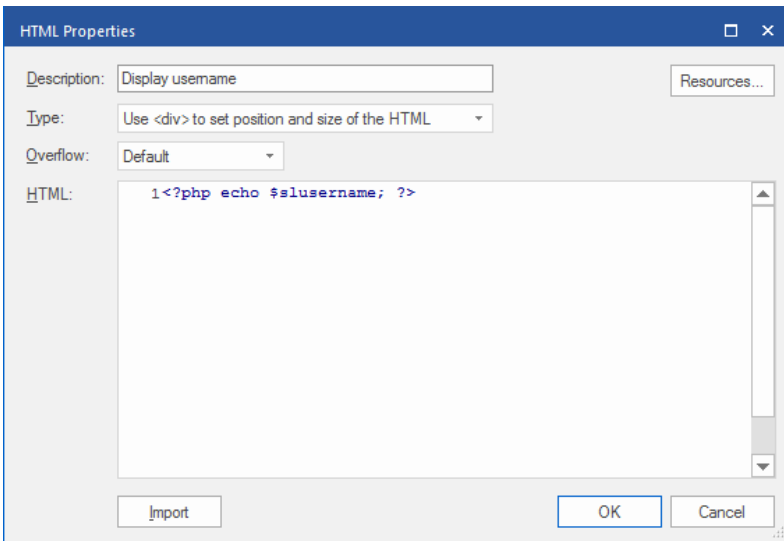
Chapter 4 Displaying user data

Sitelok allows you to display any data stored in the users record. So for example you might like to display the users username.

To do this first of all add an HTML object to the page where you want the data to be displayed.

In the HTML box paste in the following snippet

```
<?php echo $slusername; ?>
```

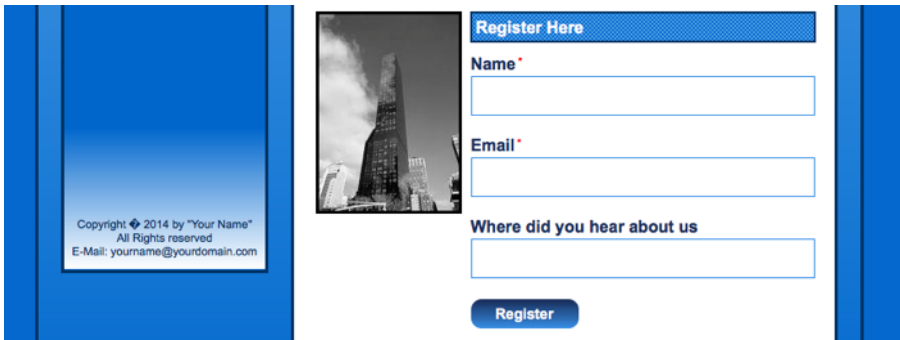


You can use the following snippets (see the manual for further details).

- Full name <?php echo \$slname; ?>
- Username <?php echo \$slusername; ?>
- First name <?php echo \$slfirstname; ?>
- Last name <?php echo \$sllastname; ?>
- Email <?php echo \$slemail; ?>
- Custom1 <?php echo \$slcustom1; ?>

for other custom fields replace the 1 in the snippet with 2 to 50.

Chapter 5 Registration forms

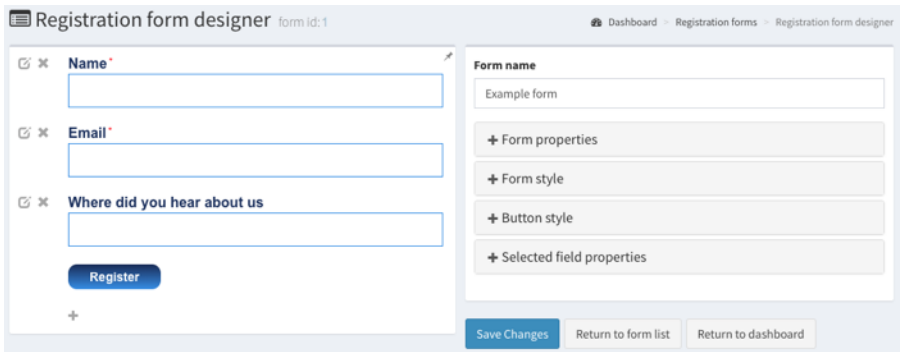


A registration form is used to allow users to register for free access to your members area. It can also be used with the Sitelok Paypal plugin for paid access too.

Creating the form


In the Sitelok control panel go to **Tools - Registration forms**. Here you can either edit an existing form or create a new one. The form designer allows you to design and style the form as well as setting things like the usergroup to add the user to, the thank you page and also the email to be sent out.

When the form is how you want it click **Save**.



Although its usually straightforward the main Sitelok manual explains how to use the designer in more detail.

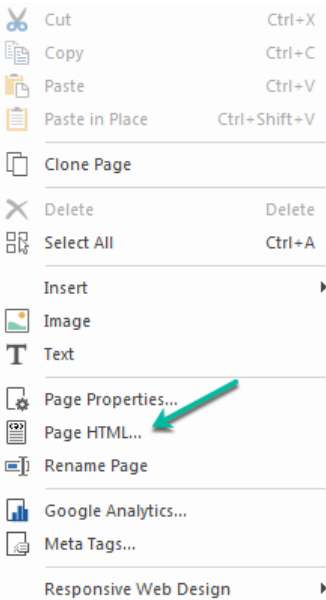
Add the form to your page

To generate the code to add to your page click  next to the form. There are a few options for the generated code but unless you need to make custom changes to the form code you can just leave the defaults to embed the form in your page using the styles you set.

You will see the code snippet steps which you will add to your page as follows.

Step 1

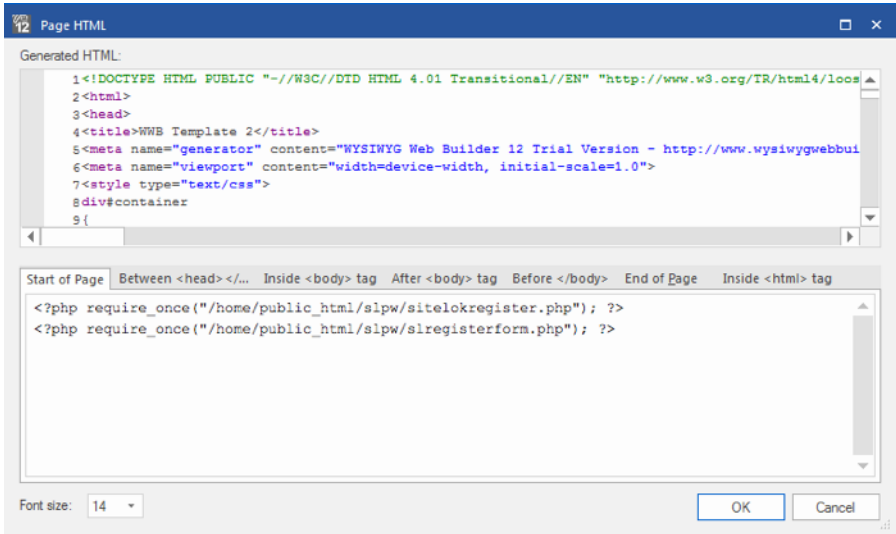
Right click on the page and select **Page HTML...**



Select the **Start of Page** tab

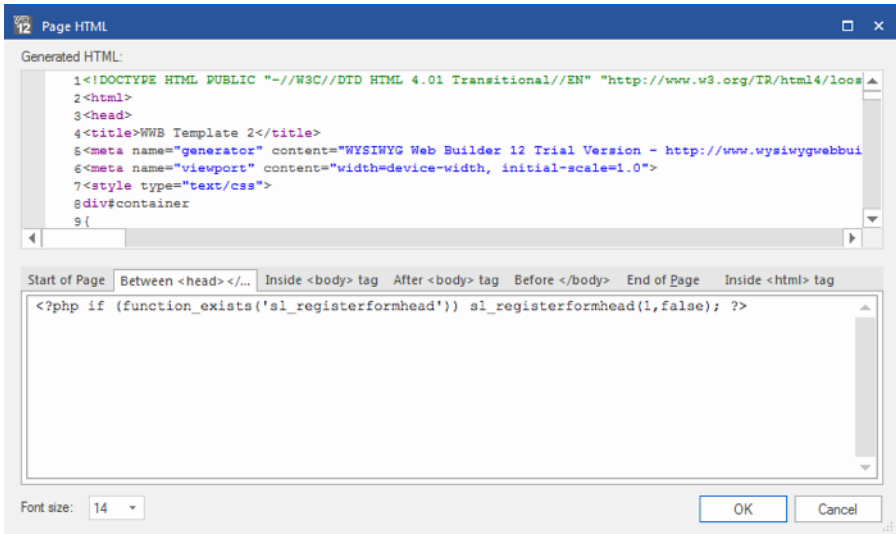
In the box paste in the step 1 snippet.

Chapter 5 - Registration forms



Step 2

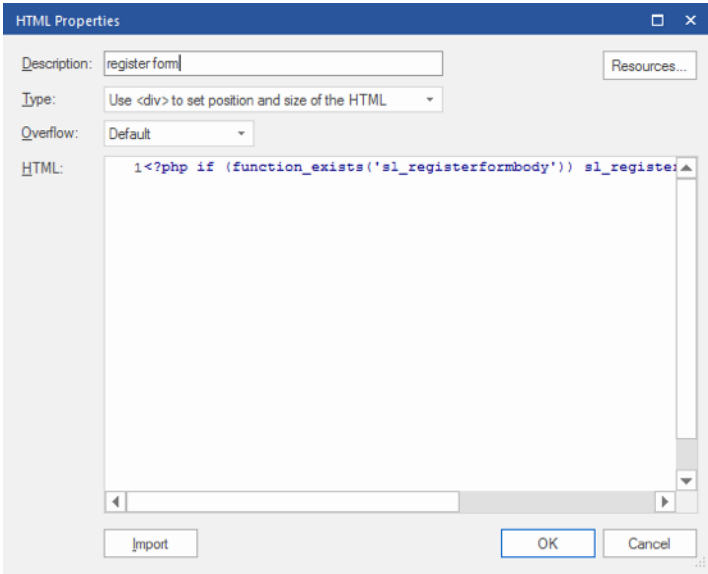
Select the **Between <head> </head>** tags tab and paste in the Step 2 snippet in the box. Click **OK** to save the changes.



Step 3

Add an HTML object to your page where you want the form to appear.

Paste the Step 3 snippet in the box and click **OK** to save the changes.



If you need to change the form you can do so in the form designer. The changes will appear automatically so you don't need to add the snippets to your page again or republish the page.

Chapter 6 Update profile forms

An update profile form allows the user to update the details that you store about them such as their password and email address.

To create an update form follow these steps

Creating the form

In the Sitelok control panel go to [Forms - Update profile forms](#). Here you can either use an existing form or create a new one. The form designer allows you to design and style the form as well as setting an optional thankyou page and emails to be sent. When the form is how you want it click [Save](#).

Although its usually straightforward the main Sitelok manual explains how to use the designer in more detail.

It's also possible to write your own form code to use with Sitelok if you need to. The main Sitelok manual explains how to do that.

Add the form to your page

Adding an update profile form to your page is done in the same way as adding a registration form described earlier on page 10 (Add the form to your page).

Chapter 7 Login forms

Sitelok has two ways for users to login. The simplest is the login form (login template) that appears if a user tries to visit a secured page and haven't yet logged in. The default login form that appears can be styled in [Forms - Default Login form style](#) or can be replaced by your own custom login template (see the main Sitelok manual for details).

Often the default login form is all that is needed as you can create a login link on your site that simply links to a secured page or to `/slpw/login.php` to force the login form to appear when necessary. However in some cases you may prefer to have a login form on one or more of your pages and this can be done as follows.

Creating the form

In the Sitelok control panel go to [Forms - Login forms](#). Here you can either use an existing form or create a new one. The form designer allows you to design and style the form as well as setting optional features such as captcha and forgotten password. When the form is how you want it click [Save](#).

Although its usually straightforward the main Sitelok manual explains how to use the designer in more detail.

It's also possible to write your own form code to use with Sitelok if you need to. The main Sitelok manual explains how to do that.

Add the form to your page

Adding a login form to your page is done in the same way as adding a registration form described earlier on page 10 (Add the form to your page).

Chapter 8 Contact forms

Contact forms allow users to send you emails with optional attachments. You integrate the contact form with Sitelok so that you can show or hide fields depending on whether the user is logged in as a member or just a visitor. You can also pre-fill fields with data from a users Sitelok data.

To create an update form follow these steps

Creating the form

In the Sitelok control panel go to [Forms - Contact forms](#). Here you can either use an existing form or create a new one. The form designer allows you to design and style the form as well as setting the email templates to use and other settings. When the form is how you want it click [Save](#).

Although its usually straightforward the main Sitelok manual explains how to use the designer in more detail.

Add the form to your page

Adding a contact form to your page is done in the same way as adding a registration form described earlier on page 10 (Add the form to your page).

Chapter 9 Download links

Sitelok can secure download links so that they only work for logged in users and can't be shared.

Storing your files

If you want to secure downloads using Sitelok you should store the files in the file folder created during installation. This will have a name like `sfiles_xxxx` and won't be found by search engines, robots or hackers. You can find the folder name by going to [Tools - Configuration - Download paths](#). You can also setup alternative file locations and use Amazon S3 if you wish.

Creating a download link

You can add a download link in your page by using the following snippet as the hyperlink.

```
<?php siteloklink('testfile.zip',1); ?>
```

changing the filename as required (no path needed).

Chapter 10 Support

Hopefully if you have followed this manual carefully everything will be working fine. However sometimes things don't go quite so smoothly so if you have any questions or problems then please check the FAQ on the support page or email us.

Support and updates for Sitelok are free of charge for one year after purchase. Shortly after purchase you should receive a username and password that provide you with access to the latest downloads, FAQ and other resources.

Support area: <http://www.vibralogix.com/support/>

Email: support@vibralogix.com