

Sitelok Azure AD SSO Login



Sitelok Azure AD SSO Plugin

Copyright 2022 Vibralogix. All rights reserved.

This document is provided by Vibralogix for informational purposes only to licensed users of the Sitelok product and is provided on an 'as is' basis without any warranties expressed or implied.

Information in this document is subject to change without notice and does not represent a commitment on the part of Vibralogix. The software described in this document is provided under a license agreement. The software may be used only in accordance with the terms of that license agreement. It is against the law to copy or use the software except as specifically allowed in the license.

It is the users responsibility to ensure the suitability of the product before using it. In no circumstances will Vibralogix be responsible for any loss or damage of data or programs as a result of using the product. Your use of the product implies acceptance of these terms.

Contents

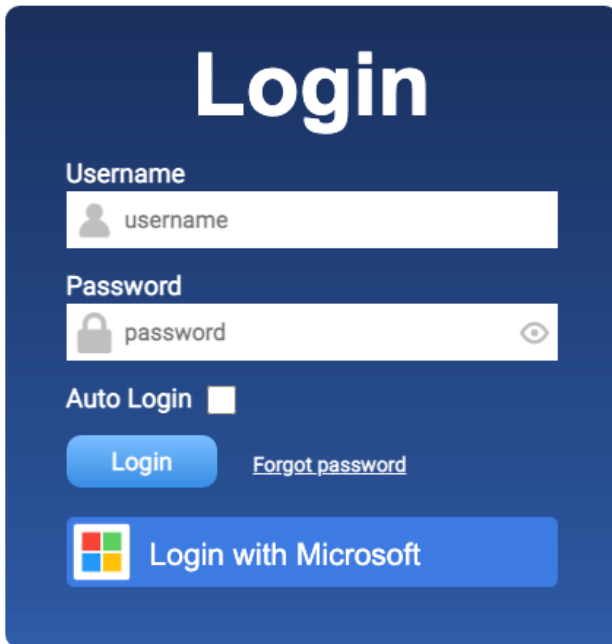
Chapter 1 Introduction	4
What is the Azure AD SSO plugin?	4
Chapter 2 Installation	5
Installing for the first time or upgrading	5
Disabling the Plugin.....	5
Uninstalling the plugin	5
Setting up the plugin	6
Setup your Azure App.....	6
Set the login action.....	7
Chapter 4 Using the plugin	9
Adding the Microsoft login button to login forms.....	9
Allowing users to link and unlink with Azure	9
Display content to Azure users	10
Selecting users who are linked to Azure.....	11
Manually linking or unlinking a user.....	11
Changing button text / translating user messages	12
Chapter 5 Support	13

Chapter 1 Introduction

What is the Azure AD SSO plugin?

The Azure AD SSO plugin allows users to login and optionally signup to your members area via Microsoft Azure AD. Its can work for web apps or intranet and is ideal for Microsoft 365 users.

Users can link and unlink their account at any time if you allow this.



Chapter 2 Installation

Installing for the first time or upgrading

- 1) Extract the contents of the zip file to your PC.
- 2) Upload the plugin_azuread folder to your existing Sitelok slpw folder using FTP. There are no special permissions required on most servers.
- 3) Login to the Sitelok control panel.
- 4) Open the following URL in the browser

https://www.yoursite.com/slpw/plugin_azuread/install.php

which will start the installation process. If all is well you will be taken to the plugin preferences page where you will see the plugin listed.

If you have any problems with installation please let us know so that we can help you.

Disabling the Plugin

To disable the plugin select **Plugin Preferences** in the **Plugin** menu option of Sitelok. Uncheck the enable box for the plugin and click the **Save** button.

You can enable it again in the same way.

Uninstalling the plugin

To permanently remove the plugin and it's settings follow these steps.

- 1) Disable the plugin as above.
- 2) Click the delete icon next the plugin in the disabled plugins section.
- 3) Confirm the action in the alert box.

If the plugin is uninstalled successfully you will be returned to the plugin preferences page.

Setting up the plugin

Setup your Azure App

Before you can enable Azure AD SSO you will need the following from your Azure App.

- Application (client) ID
- Client secret Value
- Directory (tenant) ID

On the plugin page you can click the **Setting up the app** link to get instructions on how to setup your App to work with Sitelok.

During the account setup you will be asked to enter a redirect URL which can be copied from plugin.

Once you have the the key values enter them in the plugin.

App Settings

Enable Azure AD SSO

[Setting up the app](#)

Application (client) ID

690089b-8912-4f27-b866-22b9c0

Client secret Value

C.F7Q~8912-4f27-b866-22b9c0 :p~hKwL

Directory (tenant) ID

546745c-8912-4f27-b866-22b9c0 i7682

Microsoft redirect URL to use in app setup

http://localhost/sitelokpw/slpw5/plugin_azuread/azureadredirect.php

[Copy to clipboard](#)

Set the login action

Once you have Azure app setup you need to decide what login action you want to use.

Just login the user with an existing account

This option allows users who already have linked their Sitelok account to Azure to login. If a Sitelok account is not currently linked to Azure then Sitelok can optionally try to link using a matching email account (see later).

If no matching account is found then the user is returned to the Sitelok login form where they can login with their Sitelok details which will also link the account.

Create an account if linked account not found

This option will initially work like the login option in that it will try to match an existing account. If no match is found then it will create a new Sitelok account for the user. This allows users to sign up to your members area easily. For this option you will need to set the usergroup and expiry time for the created account.

Username to use for new account

This sets the username type to use for a new account. It can either be the email address of the user or a unique username based on the users name. A random password will be assigned.

Usergroup to add user to

Enter the usergroup the user will be a member of. Multiple usergroups can be separated by commas.

Expiry days

Enter the expiry days for the usergroup. If you set multiple usergroups then enter the expiry days for each one separated by commas.

Send email to user

Check the box and select an email template if you want an email sent to the user when their account is created.

Send email to admin

Check the box and select an email template if you want an email sent to the site admin when an account is created.

Link account if matching email found

Check this option if you want the plugin to try to match the email with existing user accounts.

Show button on default login form

Check this option to have the Microsoft login button added to the default login form. You can use a small snippet to display the login button on other login forms.

Use auto login with Azure AD

If you check this option then when a user logs in via Azure it will enable Sitelok's auto login feature for the user. This is the same as if the user checked the Auto login box on the login form. The user will be automatically logged in when they return to the site without seeing any Sitelok login form. It is cancelled when the user clicks a logout link.

This option can only be used if you set the Remember me option to Auto login in [Tools - Configuration - General](#).

Chapter 4 Using the plugin

Adding the Microsoft login button to login forms

The Microsoft login button is automatically added to the default login form when the [Show button on default login form](#) checkbox is checked.

To add the button to other login forms you need to add a small code snippet to the page. This is snippet is generated for you. Go to the plugin page, scroll down and click the [Snippets](#) button. Click the [Login buttons](#) tab.

Login button

This snippet will display the Azure AD button. Usually added near your login form.

Copy the code below and paste in your page.

```
<?php if (function_exists("slazureadlogin")) slazureadlogin(); ?>
```

Copy to clipboard

Click the [Copy to Clipboard](#) button and paste in your page.

Allowing users to link and unlink with Azure

Logged in users can link or unlink with Azure when they wish if you allow this. The first time they link with Azure they will be have to approve the connection.



To generate the button go to the plugin page, scroll down and click the [Snippets](#) button. Click the [Link / unlink button](#) tab.

Click the [Copy to Clipboard](#) button and paste in your members page.

Link / unlink button

This snippet will display a button allowing the user to link or unlink with Azure AD.

Copy the code below and paste in your page.

```
<?php if (function_exists("slazureadlink")) echo slazureadlink(); ?>
```

Copy to clipboard

Display content to Azure users

You can display content only to users who are linked to Azure or who have logged in for this session using any with Azure.

To generate the snippets go to the plugin page, scroll down and click the [Snippets](#) button. Click the [Page content control](#) tab.

Select the condition you want to generate the snippets. This first snippet should be placed before your content and the second one after the content.

Page content control

These snippets allow you to display content to users who are linked to or logged in via Azure AD.

Show content when

User is linked to Azure AD

Copy and paste the code below before your content

```
<?php if ($slazureadid!="") { ?>
```

Copy to clipboard

Copy and paste the code below after your content

```
<?php } ?>
```

Copy to clipboard

Chapter 4 - Using the plugin

Please note that when a user is logged in using auto login the session will not be flagged as having logged in via Azure.

Selecting users who are linked to Azure

You can select all users are are linked to Azure. This could be useful if you want to send out an email for example. You will find the select users section at the bottom of the plugin page.

Select users

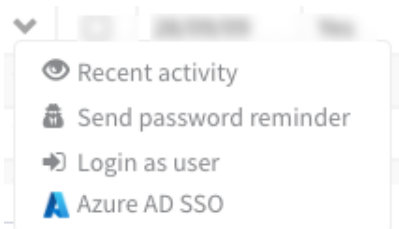
You can use the select button below to select users who are linked to Azure AD.

Please note that this will deselect any existing selected users.

Select

Manually linking or unlinking a user

You can unlink a user from the Sitelok dashboard by clicking the drop down menu next to the user in the main table and clicking **Azure AD SSO**



This will show the users Azure ID if they are linked.

Azure ID (blank to unlink)

7f18 [blurred] 523d

To unlink the user leave blank and cli **Set Id**. You can also set a users id if you know it.

Changing button text / translating user messages

You can change the button label text and any messages seen by users by adding these lines to your `slconfig.php` file.

```
define("MSG_AZAD_LGINMS", "Login with Microsoft");
define("MSG_AZAD_LINKMS", "Link with Microsoft");
define("MSG_AZAD_DISCMS", "Unlink Microsoft");
define("MSG_AZAD_NOLINKED", "Your account is not linked. Login to link it.");
define("MSG_AZAD_NOID", "This account is not linked");
define("MSG_AZAD_USEREXISTS", "This user is already registered");
define("MSG_AZAD_USERIDEXISTS", "This account is already linked");
define("MSG_AZAD_ERROR", "Could not connect with your account");
define("MSG_AZAD_USERNAMEISSUE", "Could not create unique username");
define("MSG_AZAD_EMAILISSUE", "Your account doesn't have an email address");
define("MSG_AZAD_RUSURE", "Are you sure?");
```

Chapter 5 Support

Hopefully if you have followed this manual carefully everything will be working fine. However sometimes things don't go quite so smoothly so if you have any questions or problems then please check the FAQ on the support page or email us.

Support area: <https://www.vibralogix.com/support/>

Email: support@vibralogix.com